

Operating conditions  
when driving on roads in South Australia

# CODE OF PRACTICE FOR OVERSIZE OR OVERMASS AGRICULTURAL VEHICLES

May 2008

This booklet is a legal document. You must comply with the conditions contained in it when driving  
oversize agricultural vehicles on the road. For clarification and advice, contact the  
Vehicle Permits Team on 1300 882 249.



Government  
of South Australia

Department for Transport,  
Energy and Infrastructure

# What the terms mean

**Act** is the Road Traffic Act 1961, and includes Regulations and Rules made under the Act.

**Agricultural combination** is a combination of two or more vehicles that includes at least one agricultural vehicle. For example: a tractor towing a trailer or an agricultural machine towing an agricultural implement and a small vehicle.

**Agricultural implement** is a vehicle built to perform agricultural tasks without its own motive power.

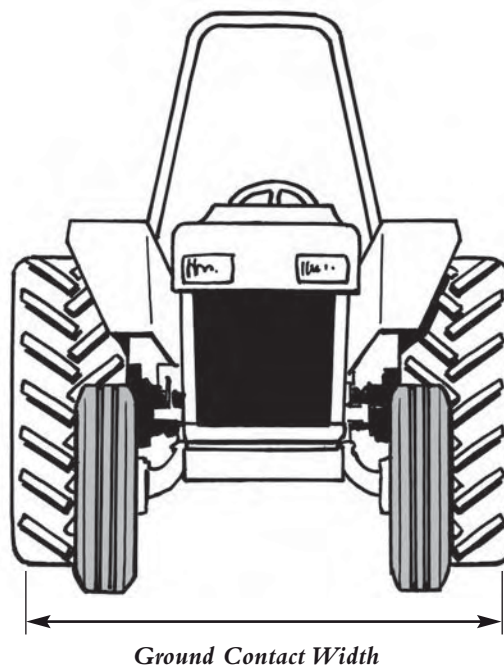
**Agricultural machine** is a machine built to perform agricultural tasks with its own motive power.

**Agricultural vehicle** is an agricultural implement, agricultural machine or a tractor.

**Code** means this Code of Practice for Oversize or Overmass Agricultural Vehicles, May 2002.

**Country Zone** means all South Australia except the Adelaide Zone (Maps 1, 2A and 2B) and the Adelaide Hills Zone (Map 3).

**Ground contact width** is the distance between the outside tyres on each end of the same axle where the outermost points of the tyres touch the ground (as illustrated below).



## **Major road means:**

- All sealed roads in the Adelaide Hills Zone (Map 3).
- Roads in the Country Zone shown on Map 4.

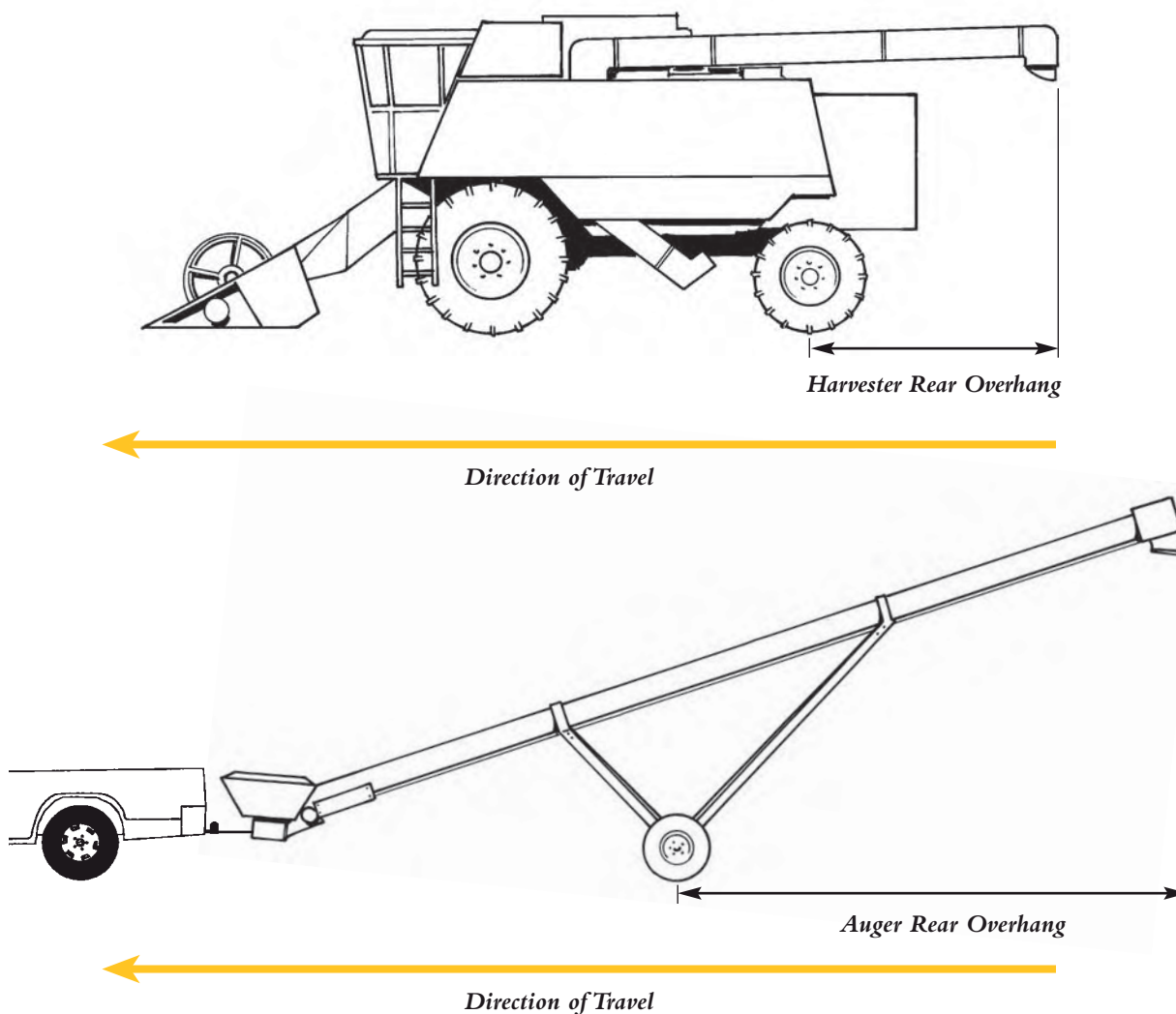
## **Minor road means:**

- Unsealed roads in the Adelaide Hills Zone (Map 3).
- All roads (sealed or unsealed) in the Country Zone that are not major roads and not shown on Map 4.

**Operator** of a vehicle is the person or business who is the driver or owner of a vehicle or combination that is being used under the terms of this Code.

# What the terms mean

**Rear overhang** means the distance from the centre of the rear axle or axle group to the rearmost part of the vehicle (as illustrated by examples below).



**Road** is a major or minor road as defined in Section 5 of the Act and includes a road-related area. For example: all public roads and any private road that is open to the public.

**Road-related area** is an area as defined in Section 5 of the Act and Regulation 5 of the Road Traffic (Miscellaneous) Regulations 1999. For example: a car park, road verges and shoulders, nature strips, and any other place used by motor vehicles that is open to or used by the public, including any private driveway.

**Single Axle** is one axle that does not form part of an axle group.

**Tandem Axle Group** is a group of two axles where the horizontal distance between the centre lines of the two axles is at least 1 metre but not more than 2 metres.

**Tractor** means a motor vehicle designed to tow and provide power for agricultural implements or other equipment, and which is usually fitted with deeply-treaded tyres.

**Triaxle Group** is a group of three axles where the horizontal distance between the centre lines of the outermost axles is more than 2 metres but not more than 3.2 metres.





# Notes



Handwriting practice area with 20 sets of horizontal dotted lines for writing.



# Table of Contents

	Page
<b>INTRODUCTION</b>	
1. What is a Code of Practice?	4
2. What vehicles are covered?	4
3. What vehicles are not covered?	4
<b>GENERAL CONDITIONS</b>	
4. Road Rules	5
5. Road Damage	5
<b>MASS LIMITS</b>	
6. Mass Limits for Single Axles	5
<b>HEIGHT LIMITS</b>	
7. Maximum Heights	6
8. Height Restrictions	6
Optus Clearance Zone	7
<b>TIMES OF TRAVEL</b>	
9. When you can not travel	8
<b>TOWING</b>	
10. Towing other Vehicles	8
11. Exemption for Rear Vision Mirrors	8
<b>WARNING OTHER ROAD USERS</b>	
12. Warning Lights	9
13. Flags	9
14. Delineators	9
15. Warning Signs	10
16. Temporary Roadside Warning Signs	11
17. Pilot Vehicles	11
<b>ZONES OF OPERATION</b>	
18. Operating Restrictions	12
<b>Zone 1</b>	
19. Size Limits	12
20. Route Restrictions	12
Central Adelaide Zone map	13
<b>Zone 2</b>	
21. Size Limits	14
22. Other Conditions for Augers and Conveyors	14
23. Route Restriction	14
Northern Adelaide Zone map	15
Southern Adelaide Zone map	16
<b>Zone 3</b>	
24. Size Limits	17
25. Other Conditions for Augers and Conveyors	17
26. Route Restrictions	17
27. Pilot Vehicles	17
Adelaide Hills Zone map	18
<b>Zone 4</b>	
28. Size Limits	19
29. Other Conditions for Augers and Conveyors	19
30. Pilot Vehicles	19
31. Route Restrictions	20
32. Travel on Ferries	20
Country Zone map	21

## Explanatory Note

An Explanatory Note contained in a box does not form part of the conditions of this Code of Practice but is provided for explanation only.



# Introduction

## 1 What is a Code of Practice?

- 1.1 This Code of Practice is a legal document issued by Department for Transport, Energy & Infrastructure (DTEI) under a Notice in the South Australian Government Gazette titled 'Oversize or Overmass Agricultural Vehicles Driven on Roads'. It sets out the conditions under which you can drive oversize or overmass agricultural vehicles or agricultural combinations that are not normally allowed general access to roads.
- 1.2 This Code replaces the requirements of the Road Traffic (Oversize or Overmass Vehicle Exemptions) Regulations 1999 when you are driving oversize or overmass agricultural vehicles or agricultural combinations.
- 1.3 This Code enables you to know what you can do, how you can do it, and what the law requires of you.
- 1.4 You must also comply with any registration conditions specified for your vehicle.

- 1.5 You must comply with all the conditions of this Code when driving an oversize or overmass agricultural vehicle on the road, otherwise you commit an offence.

## 2 What vehicles are covered?

- 2.1 You must comply with this Code if your agricultural vehicle or agricultural combination exceeds any of these limits:
- |       |               |  |
|-------|---------------|--|
| 2.1.1 | Total Mass    | - 42.5 tonnes  |
| 2.1.2 | Mass per Axle | - 7 tonnes for a single axle fitted with single tyres<br>- 9 tonnes for a single axle fitted with dual tyres |
| 2.1.3 | Width         | - 2.5 metres   |
| 2.1.4 | Height        | - 4.3 metres   |
| 2.1.5 | Length        | - 12.5 metres for a vehicle and 19 metres for a combination.   |
| 2.1.6 | Rear Overhang | - 3.7 metres   |

### Explanatory Note

Examples of vehicles covered by this Code include:

- tractors, harvesters and other self-propelled agricultural machines, seeders and bulk seed bins, ploughs, harrows, augers and conveyors, rakes, soil-tillage implements, and boom sprays;
- fuel trailers and small load-carrying trailers and/or small motor vehicles, when towed by an agricultural machine or tractor in conjunction with an agricultural task;
- any combination in which these vehicles are included.

## 3 What vehicles are not covered?

- 3.1 You can not use this Code for:
- |       |  |       |  |
|-------|--|-------|--|
| 3.1.1 | an agricultural machine or implement when it is being used, or has been adapted, to carry goods other than loads for which it was designed or constructed. | 3.1.2 | an agricultural combination that exceeds 19 metres in overall length if it includes a load-carrying vehicle. A fuel tanker or small vehicle when used in conjunction with the agricultural task is not considered a load-carrying vehicle. |
|-------|--|-------|--|

### Explanatory Note

If your agricultural vehicle or agricultural combination does not comply with this Code of Practice, you must apply for a separate, individually-issued exemption (known as a permit).

Applications for permits are assessed separately by DTEI, which will issue the appropriate permit if your proposed operation complies with the guidelines for oversize and overmass vehicle operations.



# General Conditions

## 4 Road Rules

- 4.1 When operating under this Code, you must comply with all other provisions of the Road Traffic Act 1961 and Regulations and the Motor Vehicles Act 1959 and Regulations.
- 4.2 If there is not a separate lane available for overtaking, you must, at regular intervals when it is practicable to do so, move off the road to allow other vehicles to overtake.

## 5 Road Damage

- 5.1 You must ensure that there is sufficient side and overhead clearance available on routes you intend to use.

### Explanatory Note

Some parts of the road system, such as bridges, overhead services and wires, roadside furniture (signs, traffic lights etc) and vegetation, may not provide sufficient clearance for a vehicle and load travelling under this Code.

Section 106 of the Road Traffic Act, *Damage to roads and works*, requires you to notify the Police, DTEI or Office of Public Transport if you cause damage to roads, bridges and culverts, or interfere with roadside furniture.

If you have caused anything to fall on to the road that may obstruct, damage or cause injury to people or vehicles, Australian Road Rule 293 requires you to remove it or take action to have it removed. Examples include tree branches or damaged traffic signs.

# Mass Limits

## 6 Mass Limits for Single Axles

- 6.1 Under this Code, your agricultural vehicle can exceed the mass limits for single axles up to the limits specified in Table 1.

Table 1 Single Axle Mass Limits

Axle and Tyre Configuration	Mass Limit (tonnes per axle)
Axle fitted with 2 tyres	9
Axle fitted with 4 tyres and a ground contact width more than 2.5 metres but not more than 3.5 metres	10.5
Axle fitted with 4 tyres and a ground contact width more than 3.5 metres	12

### Explanatory Note

Tandem and Triaxle Groups fitted to agricultural vehicles and any non-agricultural vehicles in an agricultural combination must comply with the axle mass limits specified in the Road Traffic (Mass and Loading Requirements) Regulations 1999.



# Height Limits

## 7 Maximum Heights

- 7.1 Your agricultural vehicle must not exceed  
- **4.9 metres**
- 7.2 The overall height of any non-agricultural vehicle being used to tow or being towed in an agricultural combination must not exceed  
- **4.3 metres**

## 8 Height Restrictions

- 8.1 If your agricultural machine, tractor, or agricultural implement is between 4.3 metres and 4.9 metres high, before starting your journey, you must:

- 8.1.2 ask ETSA Utilities about height clearances under power lines along your route;
- 8.1.2 ask Telstra about height clearances under telecommunication lines along your route;
- 8.1.3 obtain a high load clearance from Optus for travel within the Optus Clearance Zone (see Optus Clearance Map). Details of your proposed route, times of travel, load and height must be provided to obtain a clearance. If your journey has to be made at short notice, a clearance number can be obtained. You must carry the clearance or clearance number during the trip and produce it when requested by a Transport Safety Compliance Officer or Police Officer.

### Explanatory Note

You should also verify with ETSA Utilities and Telstra that the required clearance is available when travelling off the road network covered by the exemption and on to private property, such as a farm track or paddock.

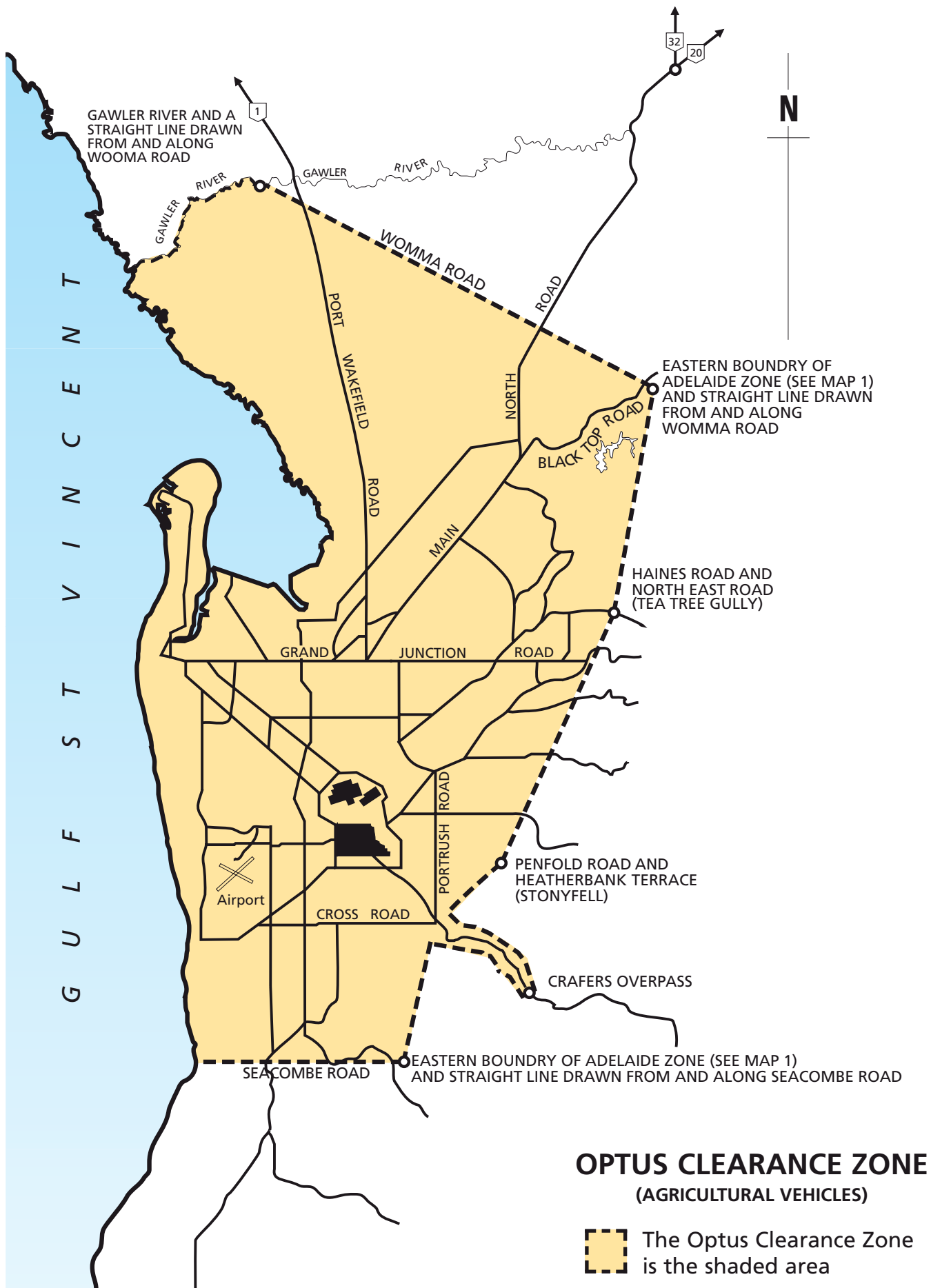
### Contact Details

Contact details for ETSA, Telstra and Optus can be obtained from the Vehicle Permits Team by calling 1300 882 249.





# Height Limits



# Times of Travel

## 9 When you can not travel

- 9.1 You must not travel between sunset and sunrise (as published in the South Australian Government Gazette).
- 9.2 You must not travel during periods of low visibility. Low visibility means any time when, due to insufficient daylight or unfavourable weather conditions, people or vehicles on a road are not clearly visible at 250 metres by a person of normal vision.

# Towing

## 10 Towing other Vehicles

- 10.1 You are not restricted in the number of vehicles that can be towed in a combination by an agricultural machine or tractor, as long as the combined length does not exceed the maximum limits specified for each of the zones (See Pages 12 to 21).
- 10.2 The maximum speed at which you can tow an agricultural implement without brakes is 50km/h.
- However:
- 10.2.1 where the road speed limit is lower than 70km/h but higher than 30km/h, the maximum speed at which you can travel is 20km/h less than the road speed limit;
- 10.2.2 where the road speed limit is 30km/h or less, the maximum speed at which you can travel is 10km/h.

### Explanatory Note

Where your agricultural implement is not fitted with brakes and you are on a road where the speed limit is 100km/h, the maximum speed you can travel is 50km/h. In a town where the road speed limit is 60km/h, the maximum speed you can travel is 40km/h. If you are passing road works where the speed limit is 25km/h, the maximum speed you can travel is 10km/h.

If your agricultural implement is fitted with brakes, normal speed limits apply.

- 10.3 All vehicles being towed must be connected by at least one safety chain or cable, or other flexible device, so that:
- 10.3.1 the towed vehicle is kept in tow if the coupling breaks or detaches accidentally; and
- 10.3.2 the normal vehicle turning movement of the coupling can operate, without unnecessary slack.
- 10.4 If practicable, the safety connection must be built and fitted so that it prevents the draw bar of the towed vehicle from hitting the ground if the coupling accidentally detaches.
- 11 Exemption for Rear Vision Mirrors
- 11.1 A vehicle towing an agricultural implement wider than 3.5 metres, which obscures the driver's rear view, is exempt from the need to fit rear vision mirrors providing the combination is accompanied by a pilot vehicle travelling behind (See 17, Pilot Vehicles).



# Warning Other Road Users

## 12 Warning Lights

- 12.1 You must display a warning light or lights if your agricultural vehicle or combination is longer than 22 metres or is:
  - 12.1.1 wider than 2.5 metres and travelling on a major road;
  - 12.1.2 wider than 3 metres and travelling on a minor road.
- 12.2 Your vehicle's warning lights must:
  - 12.2.1 emit a rotating, flashing, yellow-coloured light; and
  - 12.2.2 flash at a rate between 120 and 200 times per minute; and
  - 12.2.3 have power of at least 55 watts; and
  - 12.2.4 not be a strobe light; and
  - 12.2.5 not be a vehicle's hazard warning lights.
- 12.3 Your vehicle's warning lights must:
  - 12.3.1 be permanently connected to the vehicle's electrical system or use standard automotive connectors to allow easy disconnection and removal when not required; and
  - 12.3.2 have an on/off switch control located within easy reach of the driver; and
  - 12.3.3 be fixed to the vehicle or combination so that light is clearly visible for 500 metres in any direction. This can be achieved from one or more lights.
- 12.4 Cigarette lighter connectors can be used on agricultural machines or tractors and pilot vehicles provided they have sufficient current capacity to power the light continuously in accordance with the specifications.

## 13 Flags

- 13.1 If your agricultural vehicle or combination is wider than 2.5 metres, unless it is a tractor, it must display brightly-coloured red, yellow, or red and yellow flags at least 450mm wide and 450mm high.
- 13.2 You must position the flags to mark clearly the extremities of the vehicle and combination. The flags must be clearly visible at a distance of 100 metres to a person of normal vision.

## 14 Delineators

- 14.1 A delineator is a banner, marker or other material that is clearly visible and used to indicate the extremities of the vehicle and/or load, whichever is greater.
- 14.2 You must display delineators at the sides of the rear of any harvester comb carried on a comb trailer and on an auger or conveyor unless the extremities of the implement or vehicle are delineated by use of flags in accordance with this Code.
- 14.3 A delineator must consist of a pattern covering an area of at least 0.16 square metres, (e.g. 400mm by 400mm or 1600mm by 100mm) consisting of alternately coloured diagonal stripes at least 150mm wide, which can be either:
  - 14.3.1 red and white; or
  - 14.3.2 black and white.
- 14.4 You must paint any part of an axle extending more than 150mm from the outside wall of a tractor's tyre fluorescent yellow or have yellow fluorescent or other high-visibility material wrapped around it.



# Warning Other Road Users

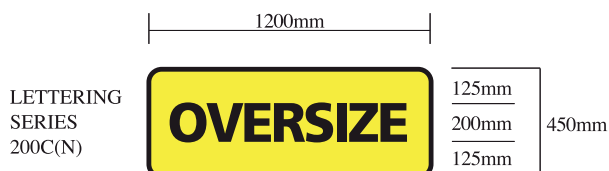
## Explanatory Note

A warning sign saying “OVERSIZE” must not be displayed on agricultural vehicles or combinations that are not oversize. Agricultural vehicles or combinations travelling on minor roads do not need to display a warning sign.

### 15 Warning Signs

- 15.1 When travelling on a major road, you must display a warning sign with the word “OVERSIZE” at the rear of an agricultural vehicle or combination wider than 2.5 metres.
- 15.2 You must keep warning signs clean so that other road users can read them.
- 15.3 A single tractor is not required to display a warning sign.
- 15.4 Agricultural vehicles or combinations crossing a major road at right angles are not required to display a warning sign.
- 15.5 Specifications for warning signs
- 15.5.1 Face of a warning sign
- The sign must:
- (a) have a yellow surface that meets either of these requirements:
    - it complies with Class 1 or 2 of Australian/New Zealand Standard AS/NZS 1906.1, “Retro-reflective Materials and Devices for Road Traffic Control Purposes” Part 1: Retro-reflective Materials; or
    - has a plain yellow background that can be used in periods of good visibility during daylight hours only; and
  - (b) have a black border at least 20mm wide. The outermost edge of the border must be set at least 10mm in from the edge of the sign, unless the sign has been made with a box edge; and
  - (c) show the word “OVERSIZE” in black capital letters at least 200mm high conforming with Australian Standard AS1744, ‘Forms of Letters and Numerals for Road Signs’, in typeface Series 200C(N); and
  - (d) have the manufacturer’s name or trademark permanently marked in letters at least 3mm but not more than 10mm high; and
  - (e) comply with the following dimensions and specifications:

- 15.5.2 Material for a warning sign
- The warning sign must be made of either:
- (a) stiff, flat, weatherproof material, such as Zinalume at least 0.8mm thick or aluminium at least 1.6mm thick; or
  - (b) flexible material provided it is:
    - held taut; and
    - positioned and secured in a manner that it is clearly seen; and
    - maintained in a condition that is easily read.
- 15.5.3 A flexible sign must comply with all other requirements relating to warning signs as if it were a stiff sign.
- 15.5.4 A warning sign fitted to the rear of a field bin can be reduced to 300mm high and be of a type that is fixed to and conforms with the shape of the field bin.
- 15.6 Mounting of warning signs
- 15.6.1 A warning sign must be mounted in an upright position at the rear of the agricultural vehicle or combination.
- 15.6.2 The lower edge of the warning sign must be:
- (a) above the bottom of the bumper bar; or
  - (b) if there is no bumper bar fitted, at least 500mm from ground level.
- 15.6.3 Warning signs can be split into two provided:
- (a) the left-hand part displays the word OVER and the right-hand part displays the word SIZE; and
  - (b) there is no border between the adjacent edges of the two parts; and
  - (c) the parts are fixed to the vehicle at the same height.
- 15.6.4 Where it is impracticable to mount the warning sign at the rear of the vehicle or combination, such as on an auger or conveyor, you may mount the sign at the rearmost part of the main frame of the vehicle, provided the sign is clearly visible.





# Warning Other Road Users

## 16 Temporary Roadside Warning Signs

16.1 You may use temporary roadside warning signs depicting the words “OVERSIZE VEHICLE AHEAD” instead of pilot vehicles where:

- 16.1.1 travel is on minor roads in Zones 3 and 4 only;
- 16.1.2 the vehicle and/or combination is less than 7.5 metres wide;
- 16.1.3 the distance travelled along the minor road is not more than 5 kilometres; and
- 16.1.4 a pilot vehicle would otherwise be required in accordance with this Code.

16.2 When using temporary roadside warning signs, you must ensure they are:

- 16.2.1 placed so that they:
  - (a) give advance warning to road users approaching the oversize vehicle; and
  - (b) give the same level of warning a pilot vehicle would provide;
- 16.2.2 securely placed on the verge of the road;
- 16.2.3 clearly visible to approaching vehicles;
- 16.2.4 not positioned in a way that would cause an obstruction or hazard; and
- 16.2.5 removed from the road as soon as possible after the journey.

16.3 Specifications for temporary roadside warning signs

- 16.3.1 Face of a temporary roadside warning sign  
The sign must:
  - (a) have a yellow surface that meets either of these requirements:
    - it complies with Class 1 or 2 of Australian/New Zealand Standard AS/NZS1906.1, “Retro-reflective Materials and Devices for Road Traffic Control Purposes” Part 1: Retro-reflective Materials; or
    - has a plain yellow background that can be used in periods of good visibility during daylight hours only; and
  - (b) have a black border at least 20mm wide. The outermost edge of the border must be set at least 10mm in from the edge of the sign, unless the sign has been made with a box edge; and
  - (c) show the word “OVERSIZE” in black capital letters at least 200mm high conforming with Australian Standard AS1744, ‘Forms of Letters and Numerals for Road Signs’, in typeface Series 200C(N); and

- (d) show the words “VEHICLE AHEAD” in black capital letters at least 100mm high conforming with Australian Standard AS1744, ‘Forms of Letters and Numerals for Road Signs’, in typeface Series 100C(N); and
- (e) have the manufacturer’s name or trademark permanently marked in letters at least 3mm but not more than 10mm high; and
- (f) comply with the following dimensions and specifications:



16.3.2 Material for a temporary roadside warning sign  
The warning sign must be made of either:

- (a) stiff, flat, weatherproof material, such as Zinalume at least 0.8mm thick or aluminium at least 1.6mm thick; or
- (b) flexible material provided it is:
  - held taut;
  - positioned and secured in a manner that can be clearly seen; and
  - maintained in a condition that is easily read.

16.3.3 A flexible sign must comply with all other requirements relating to warning signs as if it were a stiff sign.

## 17 Pilot Vehicles

17.1 You must ensure that the driver of any pilot vehicle accompanying an agricultural vehicle or combination operates in accordance with the booklet ‘Escorting Guidelines for Oversize and Overmass Vehicles and Loads’, published by DTEI.

17.2 When operating under this Code, the driver of a pilot vehicle may use a cigarette lighter socket as a power supply for warning lights, provided it has sufficient current capacity to power the light continuously in accordance with the specifications.



# Zones of Operation

## 18 Operating Restrictions

- 18.1 In different areas of the State, different length and width limits apply to the maximum size of agricultural vehicles and combinations that you may drive on the roads.
- 18.2 This booklet contains five maps of South Australia showing the areas of operation (referred to as Zones) for which the specified length and width limits and conditions detailed in this Code apply.
- 18.3 You are also restricted by the clearance height of your vehicle under certain bridges in each Zone.
- 18.4 The Code defines the maximum limits applying in each of the following zones:
- 18.4.1 Zone 1 - Shaded area - Central Adelaide Zone (Map 1)
  - 18.4.2 Zone 2 - Shaded areas - Northern Adelaide Zone (Map 2A)
    - Southern Adelaide Zone (Map 2B)
  - 18.4.3 Zone 3 - Shaded areas - Adelaide Hills Zone (Map 3)
  - 18.4.4 Zone 4 - Shaded area - Country Zone (Map 4)
    - (a) roads shown in the Country Zone (Map 4) are Major Roads;
    - (b) all roads in the Country Zone that are not defined as major roads and shown on Map 4 are Minor Roads.

## ZONE 1

### 19 Size Limits

- 19.1 In Zone 1 (Map 1):
- 19.1.1 The overall length of:
    - (a) an agricultural machine or tractor must not exceed **- 12.5 metres**
    - (b) an agricultural combination must not exceed **- 19 metres**
  - 19.1.2 The width of an agricultural vehicle must not exceed **- 2.5 metres**
  - 19.1.3 The height of an agricultural vehicle must not exceed **- 4.3 metres**
  - 19.1.4 The rear overhang of an agricultural vehicle must not exceed **- 4.5 metres**

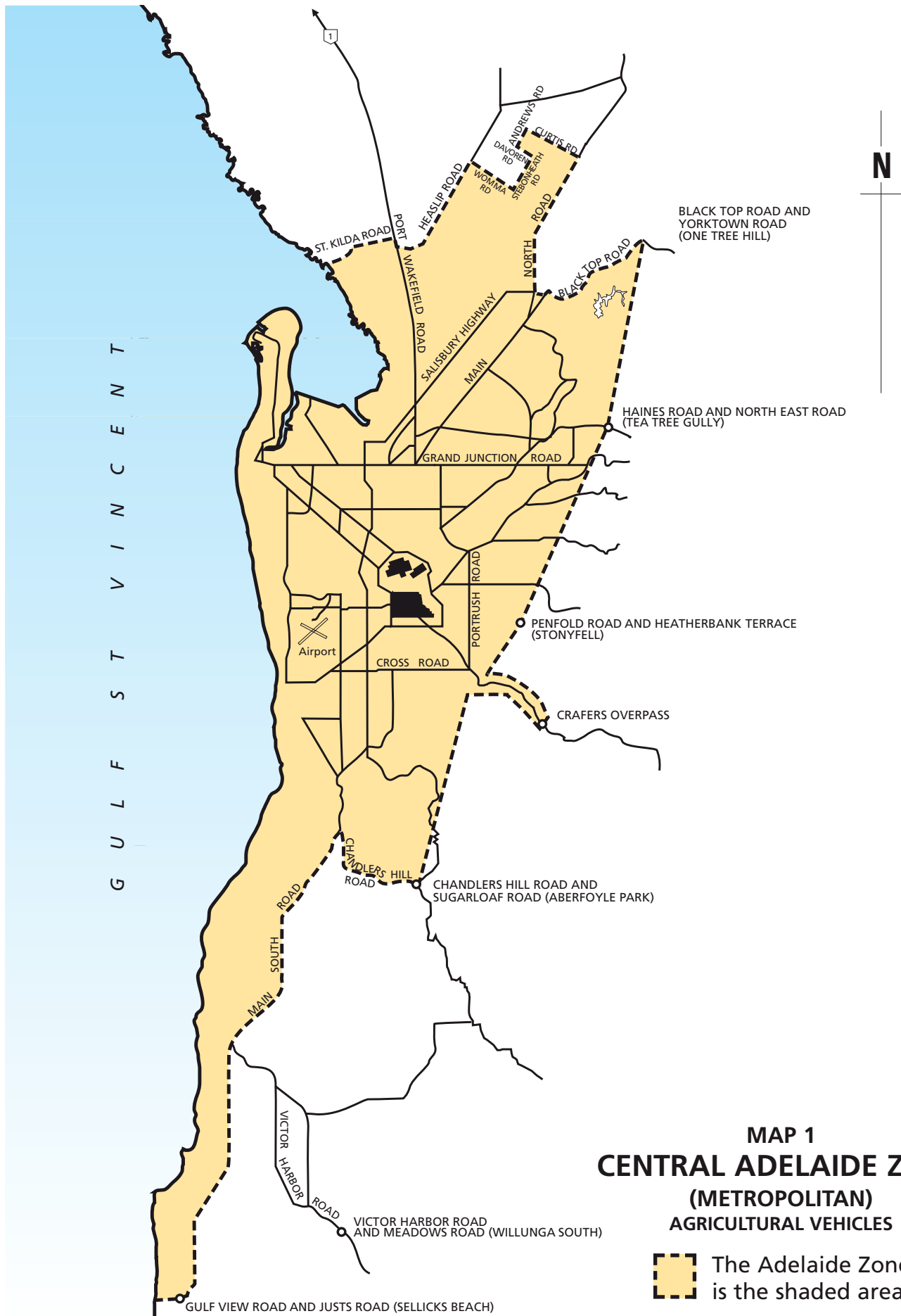
### 20 Route Restrictions

- 20.1 You are not permitted to travel on the Adelaide Crafers Highway between the Glen Osmond Road/Portrush Road intersection and the Crafers Interchange.
- 20.2 You are not permitted to travel under the following bridges in Zone 1 if the overall height of your vehicle or combination exceeds the clearance height specified below:

Structure	Clearance Height (metres)
(a) Railway bridge over Rosetta Street, West Croydon	3.0
(b) Railway bridge over Chief Street, Brompton	3.2



# Zones of Operation



# Zones of Operation

## ZONE 2

### 21 Size Limits

- 21.1 In Zone 2 (Map 2A & 2B):
- 21.1.1 The overall length of:
- (a) an agricultural machine or tractor must not exceed **- 12.5 metres**
  - (b) an agricultural combination, consisting of an agricultural machine or tractor towing a trailer, must not exceed **- 19 metres**
  - (c) an agricultural combination, consisting of an agricultural machine or tractor towing agricultural implements, which may include a fuel trailer or small vehicle, must not exceed **- 25 metres**
- 21.1.2 The width of an agricultural machine, tractor or agricultural implement must not exceed **- 3.5 metres**
- 21.1.3 The width of any other vehicle being used to tow or being towed as part of an agricultural combination must not exceed **- 2.5 metres**
- 21.2.4 The rear overhang of an agricultural machine or tractor must not exceed **- 4.5 metres**
- 21.1.5 The rear overhang of an agricultural implement (except augers and conveyors) must not exceed **- 5.5 metres**
- 21.1.6 The rear overhang of an auger or conveyor must not exceed **- 8 metres**

### 22 Other Conditions for Augers and Conveyors

- 22.1 In Zone 2, the following conditions apply to augers and conveyors:
- 22.1.1 If the rear overhang exceeds 5.5 metres, it must not exceed 50% of the overall length of the auger or conveyor up to a maximum of 8 metres.

- 22.1.2 If the rear overhang exceeds 5.5 metres, the rearmost extremity must be at least 3.5 metres from the ground when being towed.
- 22.1.3 If the rear overhang exceeds 6.5 metres, it must either:
- (a) be fitted with a warning light, at the rear extremity (see 12 Warning Lights); or
  - (b) be accompanied by a pilot vehicle travelling behind the combination (see 17 Pilot Vehicles).
- 22.1.4 If it is impractical or unsafe for you to fit a warning light to the rear extremity, it may be fitted in an alternative position provided that:
- (a) it is at least 2.2 metres above the ground when the auger/conveyor is connected to the towing vehicle;
  - (b) it is not more than 4 metres from the rear extremity;
  - (c) what remains of the auger/conveyor mainframe behind the warning light is painted white;
  - (d) a brightly-coloured red; yellow; or red and yellow flag at least 450mm long and 450mm wide is fitted which clearly defines the rear extremity.

### 23 Route Restriction

- 23.1 You are not permitted to travel under the following bridge in Zone 2 if the overall height of your vehicle or combination exceeds the clearance height specified below:

Structure	Clearance Height (metres)
(a) Road bridge over St Andrews Terrace, Willunga	4.5

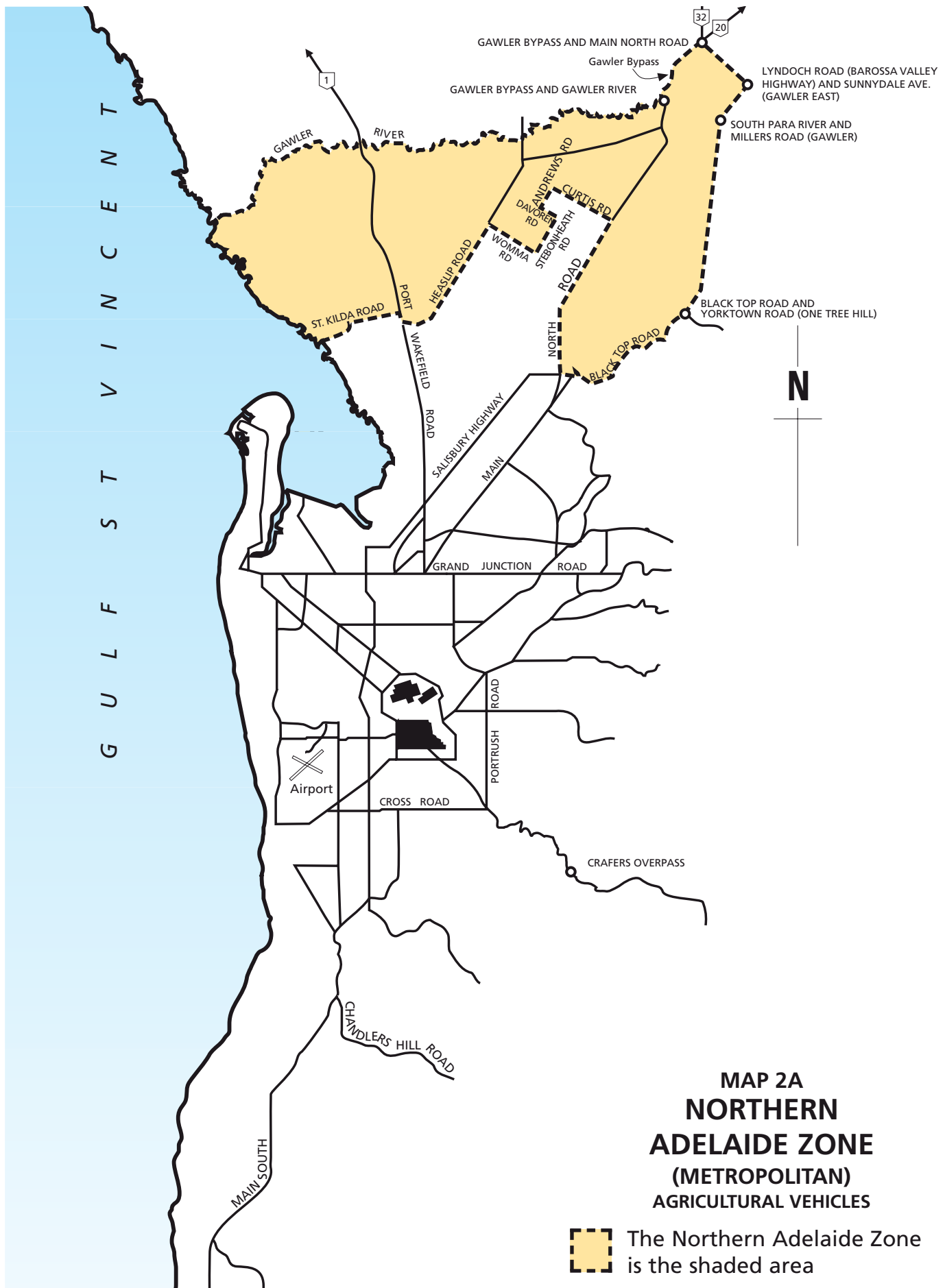
### Explanatory Note

If your agricultural vehicle or combination is wider than 2.5 metres, you may use pilot vehicles in Zone 2 at your discretion to provide advance warning to other road users.

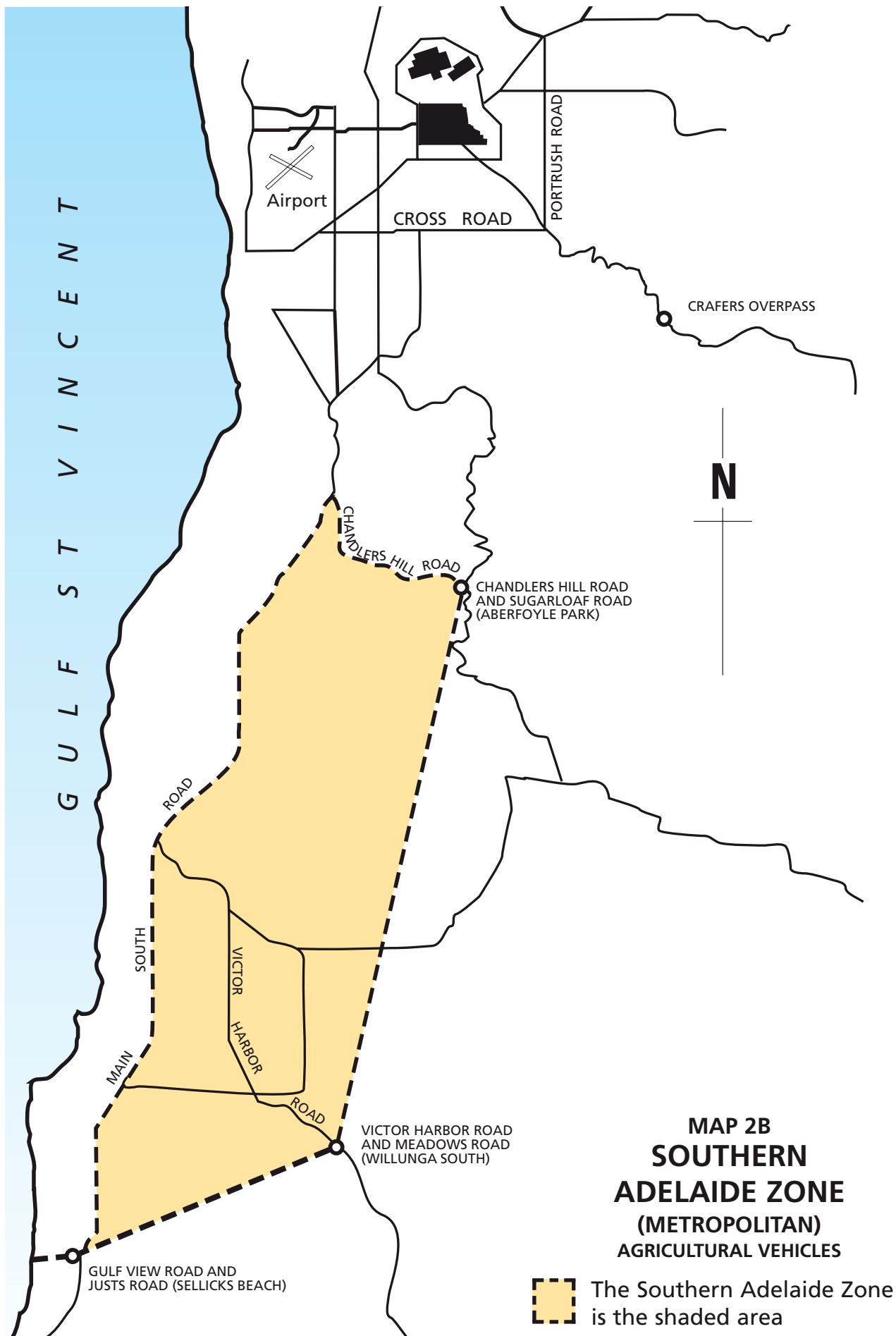




# Zones of Operation



# Zones of Operation



# Zones of Operation

## ZONE 3

### 24 Size Limits

#### 24.1 In Zone 3 (Map 3):

##### 24.1.1 the overall length of:

- (a) an agricultural machine or tractor must not exceed **- 12.5 metres**
- (b) an agricultural combination, consisting of an agricultural machine or tractor towing a trailer, must not exceed **- 19 metres**
- (c) an agricultural combination, consisting of an agricultural machine or tractor towing agricultural implements, which may include a fuel trailer or small vehicle, must not exceed **- 25 metres**

##### 24.1.2 The width of an agricultural machine, tractor or agricultural implement must not exceed **- 3.7 metres**

##### 24.1.3 The width of any other vehicle being used to tow or being towed as part of an agricultural combination must not exceed **- 2.5 metres**

##### 24.1.4 The rear overhang of an agricultural machine, tractor or agricultural implement (except augers and conveyors) must not exceed **- 4.5 metres**

### 25 Other Conditions for Augers and Conveyors

#### 25.1 On major roads, the rear overhang of an auger or conveyor must not exceed **- 4.5 metres**

#### 25.2 On minor roads, the rear overhang of an auger or conveyor must not exceed **- 5.5 metres**

### 26 Route Restrictions

#### 26.1 You are not permitted to travel under the following bridges in Zone 3 if the overall height of your vehicle or combination exceeds the clearance height specified below:

Structure	Clearance Height (metres)
(a) Railway bridge over Mount Barker Road, Aldgate	4.4
(b) Road bridge over Bald Hills Road, Mount Barker	4.5
(c) Road bridge (Stirling Interchange) over Mount Barker Road, Stirling	4.6
(d) Road bridges over Pine Ave (Echunga Road), Hahndorf	4.8
(e) Road bridge over Fowler Road, Bridgewater	4.8

### 27 Pilot Vehicles

#### 27.1 If your agricultural machine, tractor or agricultural implement is wider than 3 metres, a pilot vehicle must travel:

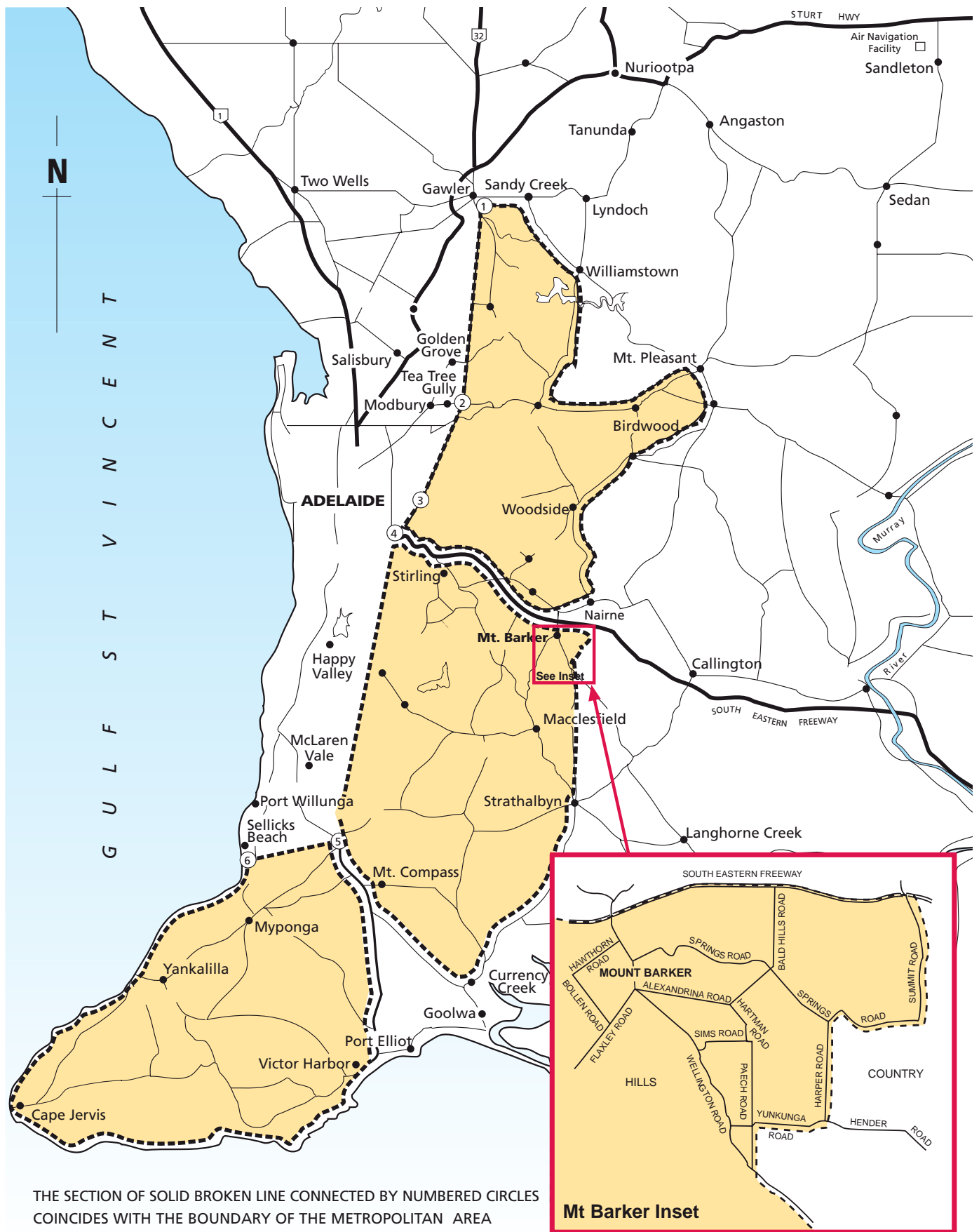
- 27.1.1 in front if there is not a clear view of the road up to 500 metres ahead;
- 27.1.2 at the rear if there is not a clear view of the road up to 500 metres behind.

### Explanatory Note

Temporary roadside warning signs can be used instead of pilot vehicles (see Page 11) on minor roads only.



# Zones of Operation





# Zones of Operation

## ZONE 4

### 28 Size Limits

#### 28.1 In Zone 4: (Map 4)

##### 28.1.1 The overall length of:

- (a) an agricultural machine or tractor must not exceed **- 12.5 metres**
- (b) an agricultural combination, consisting of an agricultural machine or tractor towing a trailer, must not exceed **- 19 metres**
- (c) an agricultural combination, consisting of an agricultural machine or tractor towing agricultural implements, which may include a fuel trailer or small vehicle, must not exceed, **- 30 metres**

##### 28.1.2 The width of an agricultural machine, tractor or agricultural implement must not exceed **- 7.5 metres**

##### 28.1.3 The width of any other vehicle being used to tow or being towed as part of an agricultural combination must not exceed **- 2.5 metres**

##### 28.1.4 The rear overhang of an agricultural machine or tractor must not exceed **- 4.5 metres**

##### 28.1.5 On major roads, the rear overhang of an agricultural implement (except augers and conveyors), must not exceed **- 4.5 metres**

##### 28.1.6 On minor roads, the rear overhang of an agricultural implement must not exceed 50% of the overall length of the implement if the overhang exceeds 5.5 metres, but must not exceed **- 8 metres**

### 29 Other Conditions for Augers and Conveyors

#### 29.1 The rear overhang of augers and conveyors must not exceed **- 8 metres**

#### 29.2 For travel on major roads, the following conditions apply to augers and conveyors:

29.2.1 if the rear overhang exceeds 5.5 metres, it must not exceed 50% of the overall length of the auger or conveyor.

29.2.2 if the rear overhang exceeds 5.5 metres, the rearmost extremity must be at least 3.5 metres from the ground when being towed.

29.2.3 if the rear overhang exceeds 6.5 metres, it must either:

- (a) be fitted with a warning light, at the rear extremity (see 12 Warning Lights); or
- (b) be accompanied by a pilot vehicle travelling behind the combination (see 17 Pilot Vehicles).

29.2.4 if it is impractical or unsafe for you to fit the warning light to the rear extremity, it may be fitted in an alternative position provided that:

- (a) it is at least 2.2 metres above the ground when the auger/conveyor is connected to the towing vehicle;
- (b) it is not more than 4 metres from the rear extremity;
- (c) what remains of the auger/conveyor mainframe behind the warning light is painted white;
- (d) a brightly-coloured red, yellow, or red and yellow flag at least 450mm wide and 450mm high is fitted which clearly defines the rear extremity.

#### 29.3 For travel on minor roads, the following condition applies to augers and conveyors:

29.3.1 if the rear overhang exceeds 5.5 metres, it must not exceed 50% of the overall length of the auger or conveyor.

### 30 Pilot Vehicles

#### 30.1 For travel on major roads in Zone 4, the following pilot vehicle requirements apply:

**Table 2 Zone 4 - Major Roads in the Country Zone (Map 4)**

Width of Vehicle (metres)	Pilot Vehicle Requirements
Wider than 2.5 metres but not more than 3.7 metres	No pilot vehicle required.
Wider than 3.7 metres but not more than 6 metres	A pilot vehicle is required in front if there is not a clear view of the road up to 500 metres ahead of the agricultural vehicle or combination. A pilot vehicle is required at the rear if there is not a clear view of the road up to 500 metres behind the agricultural vehicle or combination.
Wider than 6 metres but not more than 7.5 metres	Two pilot vehicles are required, one at the front and one at the rear.



# Zones of Operation

30.2 For travel on minor roads in Zone 4, the following pilot vehicle requirements apply:

**Table 3 Zone 4 - Minor Roads in the Country Zone (Map 4)**

Width of Vehicle (metres)	Pilot Vehicle Requirements
Wider than 2.5 metres but not more than 3.7 metres	No pilot vehicle required.
Wider than 3.7 metres but not more than 7.5 metres	A pilot vehicle is required in front if there is not a clear view of the road up to 500 metres ahead of the agricultural vehicle or combination. A pilot vehicle is required at the rear if there is not a clear view of the road up to 500 metres behind the agricultural vehicle or combination.

## Explanatory Note

Temporary roadside warning signs can be used instead of pilot vehicles (see Page 11) on minor roads only.

## 31 Route Restrictions

### 31.1 In Zone 4: (Map 4)

31.1.1 Agricultural vehicles and combinations more than 3.05 metres wide and/or 23 metres long must not travel on:

- (a) the road between Stirling North and Wilmington, known as Horrocks Pass;
- (b) the road between Stirling North and Quorn, known as Pichi Richi Pass;
- (c) the bridge over the River Murray on the Princes Highway at Murray Bridge;
- (d) the Paringa Bridge on Route 20 (Sturt Highway) over the River Murray at Paringa.

31.1.2 Agricultural vehicles and combinations must not travel through the Port Germein Gorge on the road between Port Germein and Murraytown.

31.2 You are not permitted to travel under the following bridges in Zone 4 if the overall height of your vehicle or combination exceeds the clearance height specified below:

31.3 Agricultural vehicles and combinations that exceed 2.5 metres in width must not travel on the Hindmarsh Island Bridge without Police closing the bridge to traffic.

31.4 Agricultural vehicles and combinations that exceed 4.0 metres in width must not travel on the following bridges without Police closing the bridge to traffic:

31.4.1 Port Augusta Bridge, Port Augusta

31.4.2 Swanport Bridge, Murray Bridge

31.4.3 Berri Bridge, Berri

31.4.4 Blanchetown Bridge, Blanchetown

31.4.5 Kingston Bridge, Kingston on Murray

Structure	Clearance Height (metres)
(a) Murray Bridge over Long Flat Road on flood plain, Murray Bridge	4.8
(b) Arches over the Barossa Valley Way (main street), Tanunda	4.8

## 32 Travel on Ferries

32.1 If planning to travel on a ferry, you must obtain the approval of the ferry operator before commencing your journey.

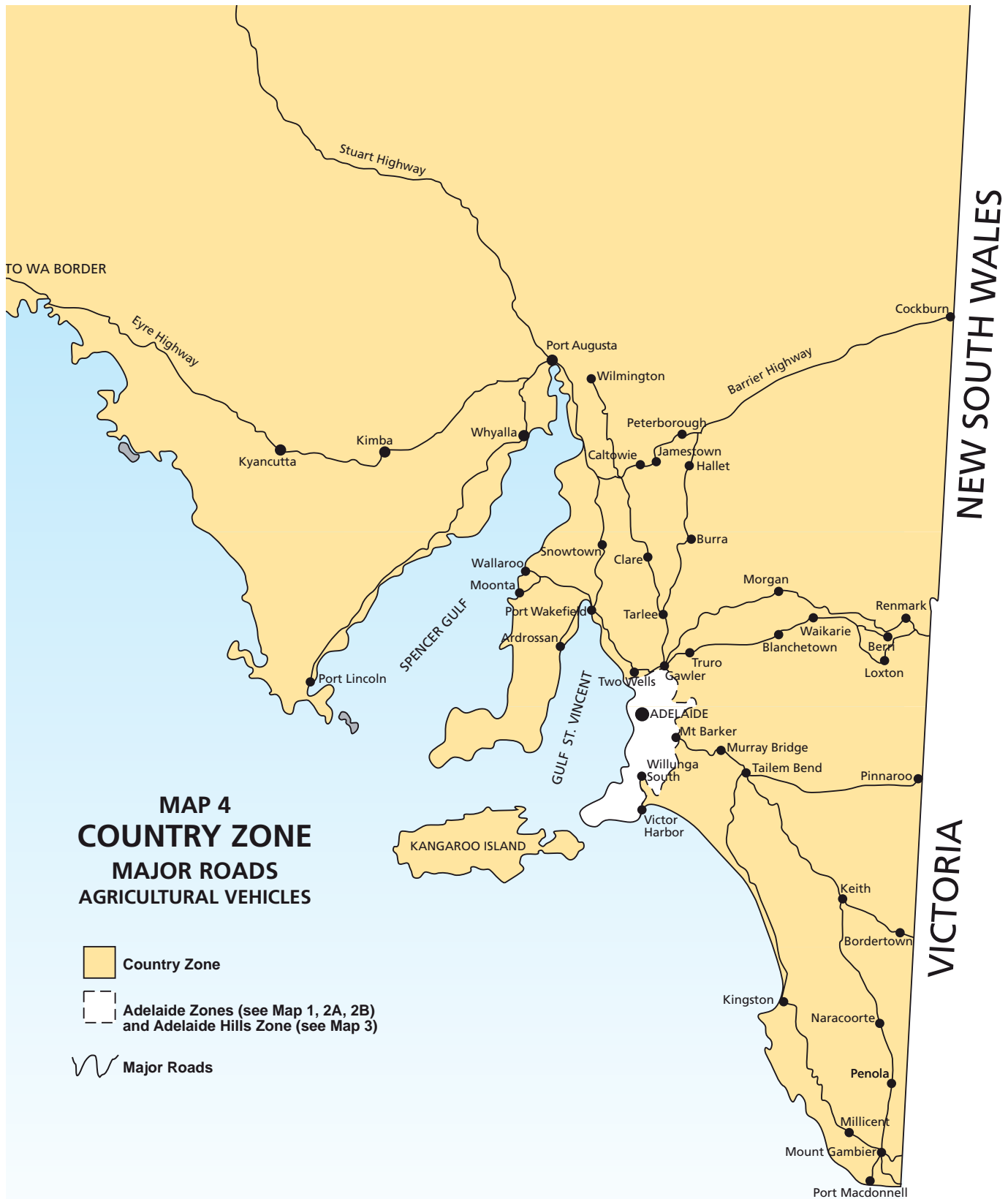
32.2 You must comply with all reasonable directions of a ferry operator, including providing details of the vehicle and load.

## Explanatory Note

Contact details for ferry operators are available from the Vehicle Permits Team on 1300 882 249.



# Zones of Operation





For further information relating to this Code of Practice and for applications for Permits, contact:

**Vehicle Permits Team  
Department for Transport Energy & Infrastructure (DTEI)**

Located at: **Kateena Street  
REGENCY PARK  
SA 5010**

Postal Address: **PO Box 1  
Walkerville SA 5081**

Telephone: **1300 882 249**  
Facsimile: **(08) 8348 9551**

